

L30 Standard boat specification



LOA	9,25 m
LWL	9,17 m
Beam	2,54 m
Draft	1,88 m / 0,58 m
Displacement / ballast	2100 kg / 800 kg
Engine	Diesel or Electric
Fresh water	55 l
CE Category	B / A optional
Mast length above WL	13,15 m
Main sail	29,8 m²
J1	22,7 m²
A2	83 m²
Rigg	Carbon
Design	Andrej Justin

1. Hull and Deck

White hull and deck built in sandwich using vinylester resin, unidirectional and biaxial fibers and different density PVC cores in vacuum bagged infusion technology. High performance isophthalic gelcoat

2. Keel

Retractable T-keel

Stainless steel keel fin structure with fiberglass epoxy shell

Lead bulb

Trim Tab system

GRP keelbox laminated in the hull structure

Purchase system for keel lifting. Keel is operated for the set down / lift up by the halyard winch

3. JEFA Steering System

2 Steering pedestals

2 Carbonautica composite steering wheels 700 mm

2 lifting rudders in rudder boxes fitted to the transom

4. Deck Equipment

3 foldable mooring cleats

2 Antal XT 40 halyard winches,

2 Antal XT 30 primary winches in cockpit

3 winch handles

Spinlock jammers for halyards, backstays and tacklines

3D system for Jib barber outhaul

Antal, Harken Deck hardware

Bobstay (Pre-stretched Dyneema)

Magnetic marine steering compass

Harken main sheet traveler

Pulpit, pushpits and lifeline stanchions

Folding aluminum safety ladder

5. Water System

Soft water tank capacity 55 l

Water tap in galley

Water tap in head compartment

Manual bilge pump in cockpit

6. Interior

Spacious front area

Stowage room below liner. Ultra light covers made of PVC sandwich

Head compartment 175 cm high to the starboard

Wash sink in the head

Galley post with wash sink to the port

Two aft berths

Carbon composite hand holds

7. Hatches and portlights

6 hull portlights: 2 in the cabin; 2 on the coach roof coamings; 2 opening portlights in the cockpit

Lewmar 60 Low profile opening fore hatch

Sliding hatch on coach roof

8. Rig

Fractional Pauer rig:

- Carbon Mast;
- Carbon Spreaders;
- Carbon Boom;
- Carbon Bowsprit.

Stainless steel rod shrouds

Single line reefing system operated from cockpit

Removable Dyneema backstays/runners

Main halyard 1:2 lead aft to cockpit

J1, J3, Code0, A2 halyards

All running rig - Dyneema

Forestay/J1 Furler incl halyard swivel

9. Transportation

The boat's weight, width and retractable keel make her trailerable and allow launch on the ramp, which ensure easy logistic, marina handling and storage.

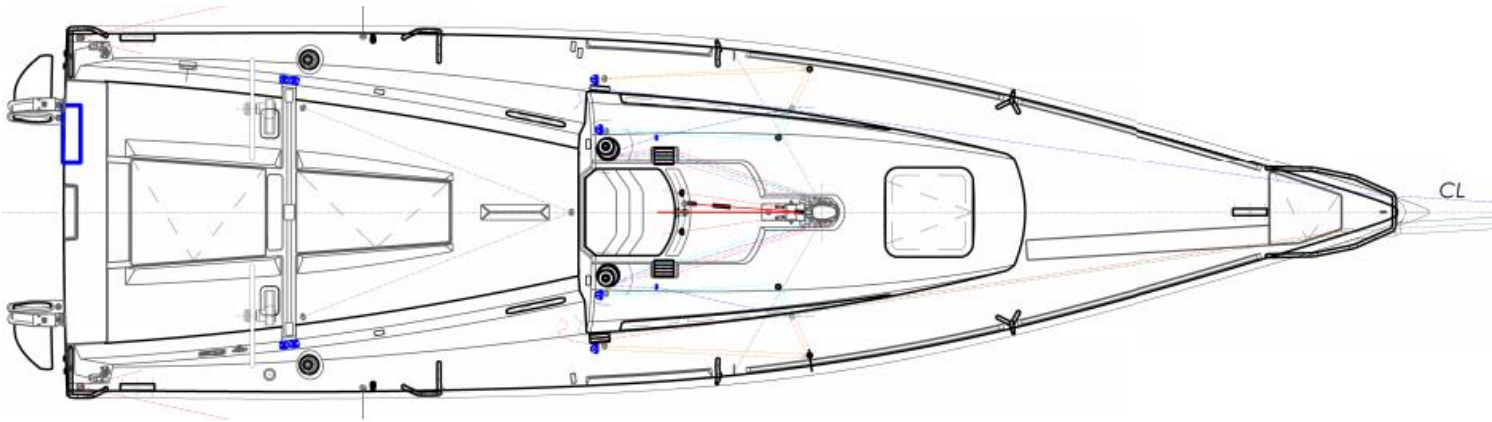
10. Certification

The boat is CE certified by IMCI (International Marine Certification Institute) and delivered with a CE certificate and a CE plaque for category B. Upgrade for CE Cat A is optional

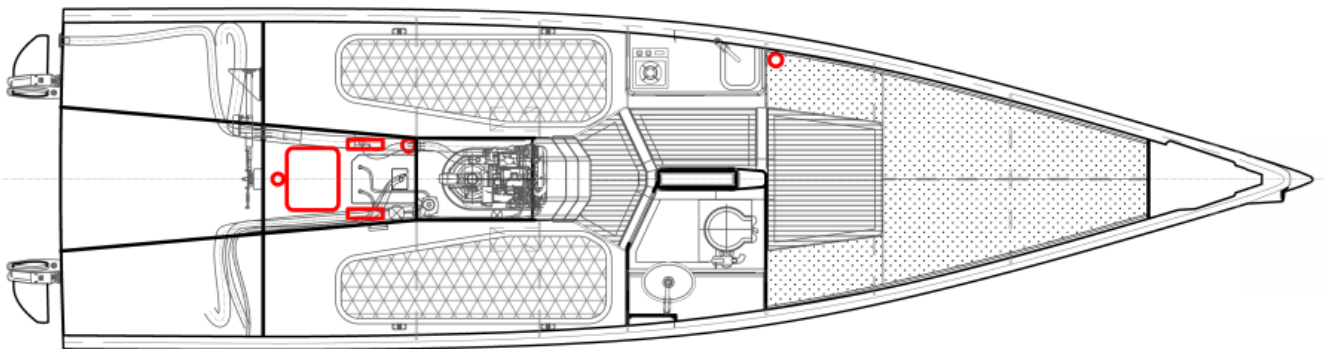
Modifications reserved. Chosen extra equipment may affect this standard specification. Drawings are for orientation only. Measurements are not to be taken from these drawings. Drawings and photos do show optional equipment.

LAYOUT

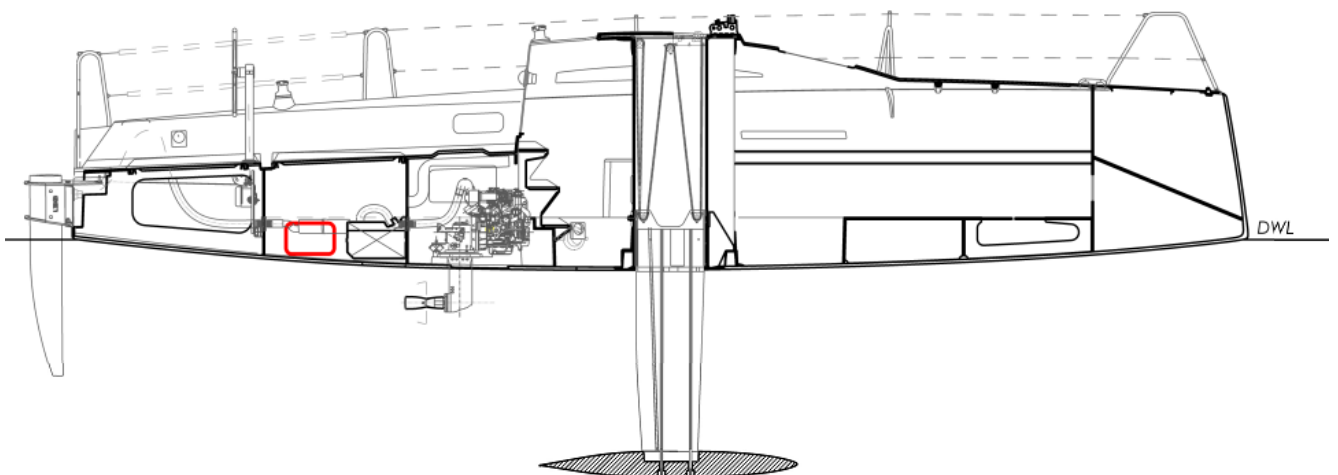
L30 Deck Plan



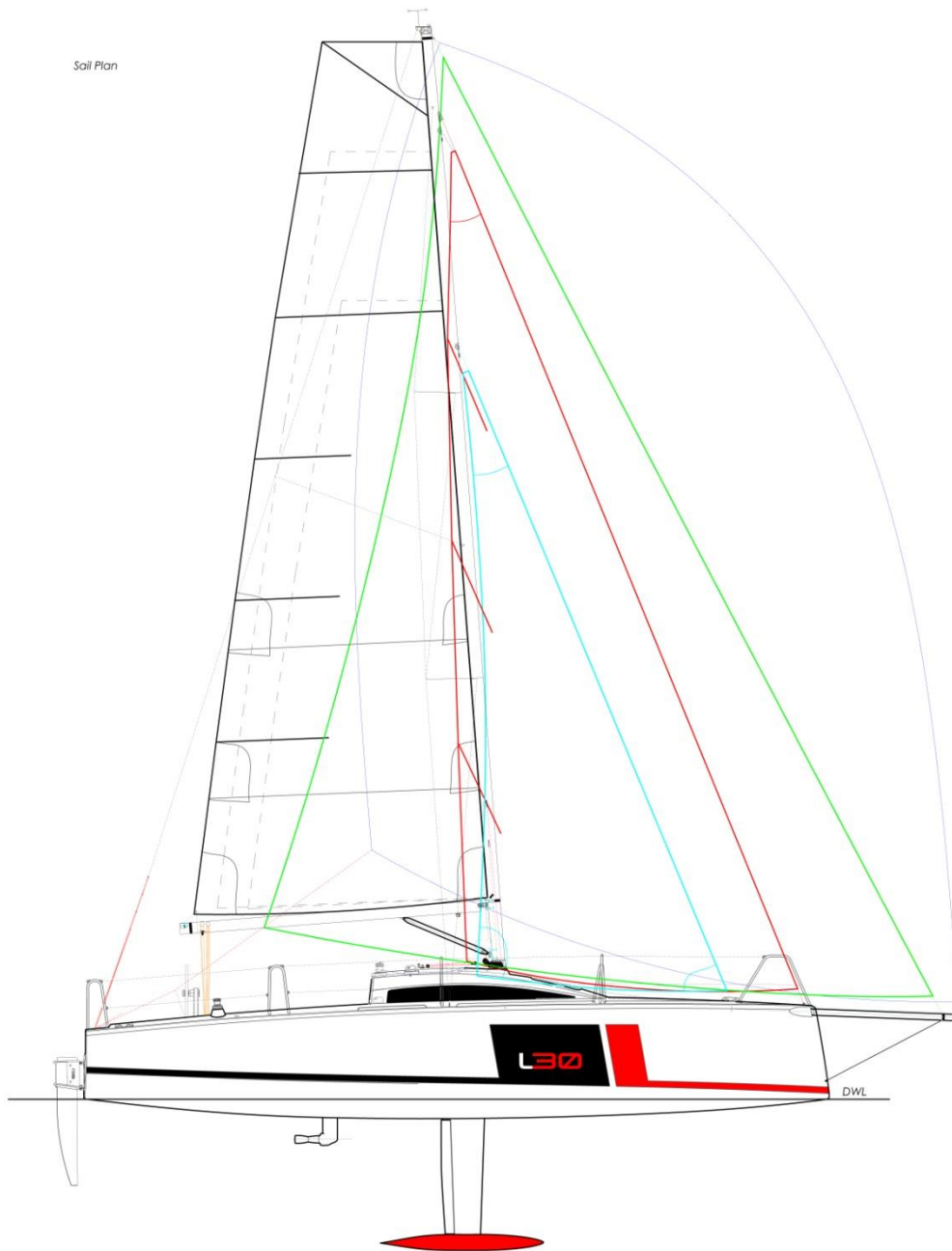
L30 interior layout



L30 diametral plane



L30 Sail plan



I	11,1	m
J	3,7	m
P	10,7	m
E	3,7	m
Ispi	11,88	m
SPL	5,85	m
Main	30	m ²
J1	23	m ²
A2	85	m ²